

# Sweet



## BTEC in Personal Growth and Wellbeing



**edexcel**   
Approved Centre from Pearson



**BTEC**   
Approved Centre from Pearson



## What is Sweet?

Sweet is an **innovative and engaging resource** used to deliver a BTEC Level 1 and 2 qualification in Personal Growth and Wellbeing. Mapped against the new RSE curriculum, Sweet teaches valuable skills to help students lead happier, healthier and more successful lives.

**Available in both English and Welsh,** Sweet creates engaging conversations about life's big issues, helping learners to gain a better knowledge of themselves and the world around them.

"We love the Sweet programme! It has everything that we need to cover to help develop our students into well rounded individuals. It fully supports the development of students in an engaging way, and the topic areas make pupils more aware of how choices we make impact on ourselves and the world around us."

**St Martin's School**

## How is it delivered?

**The Sweet resource is flexible** and can be delivered through allocated PSHE time, registration time, core subjects (including maths, science, and PE), or even as a standalone option choice.

Centres can choose from our brand new e-Sweet platform, for a **fully digital** teaching and learning experience, our **classic workbooks** for classroom based learning, or even choose a **blended** approach with workbooks and e-Sweet. Sweet can also be adapted for all learners, and learning outcomes can be evidenced in alternative formats.

## Why choose Sweet?

**Over 95%** of learners who are registered on Sweet **achieve the qualification**. More than 8000 pupils, and 200 centres across England and Wales currently use the resources and love the benefits that they offer. These include secondary schools, pupil referral units, youth services, mental health hospitals and special schools.

## Who is Sweet for?

Sweet is designed for secondary school learners in Year 7 - 11.



# Units



**Book 1** Physical Health & Wellbeing

**Fitter, Healthier, Happier**



**Book 2** Emotional Wellbeing

**I've Got a Feeling**



**Book 3** Social Health & Wellbeing

**Skills for Social Success**



**Book 4** Sexual Health & Wellbeing

**Let's Talk About...**



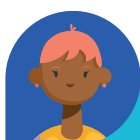
**Book 5** Personal Identity

**This is Me!**



**Book 6** Environmental Awareness

**Our World, Our Future**



**Book 7** Financial Awareness

**Making Money Work for Me!**



**Book 8** Personal Progress

**Future Roles and Setting Goals**

Level of study	GCSE size equivalent	Grade equivalent	Units to complete
Level 2 Extended Certificate	2	9-4	8 units
Level 2 Certificate	1	9-4	5 optional units
Level 2 Award	0.5	9-4	2 optional units
Level 2 Subsidiary Award	0.25	9-4	1 optional unit
Level 1 Extended Certificate	2	3-1	7 optional units
Level 1 Certificate	1	3-1	4 optional units
Level 1 Award	0.5	3-1	2 optional units
Level 1 Subsidiary Award	0.25	3-1	1 optional unit

## Resources

Workbooks	<b>£21.95</b>
e-Sweet	<b>£17.95</b>
Workbooks + e-Sweet	<b>£29.95</b>

## Registration + Certification fees

Sweet offers a fully managed service, which includes all:

- Administration
- Registration
- Verification
- Accreditation and certification responsibilities
- Internal verifier visits
- Ongoing online, email and telephone support
- Two centre visits

Extended Certificate	<b>£91</b>
Certificate	<b>£66</b>
Award	<b>£37</b>
Subsidiary Award	<b>£22</b>
<b>No Hidden Costs</b>	

"The Llwyddo/Sweet course lends itself well as an option choice. It's a great course which helps students develop life skills."

*Ysgol Gyfun Gwyr, Swansea*

## Training

Online training session held via Microsoft Teams. The 3-hour session provides a comprehensive overview of the qualifications and the administration requirements.

**£275.00 Per Person**

"Completing the Sweet project truly changed my life for the better. I would recommend it to any student as it is easy to understand, relevant and enjoyable."

*Kylie, Sweet Learner*

**Prices may be subject to VAT and postage costs.**

**Success is Sweet**



## Next Steps

To request more information or to schedule a visit to discuss your interests and requirements, please get in touch:



info@sweet.education  
**07874 869690**